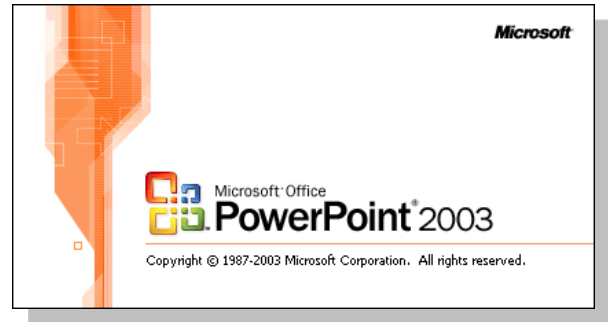


Embedding Into Microsoft PowerPoint 2003



1. Find video on You Tube. Copy URL.
2. Launch power point.
3. Insert a new slide.
4. Change to blank layout.
5. Click “view”, “tool bars”, and “control tool box”.
6. Click “more control” in lower right corner of the tool box.
7. Scroll down and select “Shockwave Flash Object”.
8. Close the tool box.
9. Click and draw box.
10. Minimize power point. Launch word.
11. Paste the You Tube URL.
12. Delete “=” and replace with a forward /.
13. Delete “watch?” and change to forward/.
14. Select and copy new URL.
15. Close word.
16. Go back to power point. Right click. Click on properties.
17. Find “movie” on list and paste new URL next to “movie”.
18. Close properties and save power point.
19. Click “slide show” and “view show”.
20. Click arrow in middle to play video